

WomenExplore

Lecture and Discussion Forum

Fall 2018 Series

Struggles, Strengths and Strategies



September 13

NECESSARY LOSSES

11.30am Lecture: **JANET COOPER NELSON**, chaplain, Brown University, on board of Hope Hospice and Palliative Care of Rhode Island
Followed by a *Letting Go* ritual, facilitated by Lindsa Vallee

September 20

THE IMPACT OF WOMEN IN POLITICS

Focus: Elaine Fisher

Lecture: **BRIDGETTE BRUNO**, communications associate with the Barbara Lee Family Foundation, working to advance women's representation in American politics



September 27

STRENGTHEN YOUR BODY, STRENGTHEN YOUR MIND

Focus: Erica Kenny

Lecture: **CHERYL SUCHORS**, author of fiction, poetry, essays and *48 Peaks: Hiking and Healing in the White Mountains*; surviving injuries, grief and cancer to become a writer

October 4

REACHING OUT: SUPPORT AROUND SUICIDE AND DEPRESSION

Focus: Barbara Villandry

Lecture: **DANIEL JACKSON**, MIT, author of *Portraits of Resilience*



October 11

NIPPING SEXUAL HARASSMENT IN THE BUD

Focus: WomenExplore community sharing

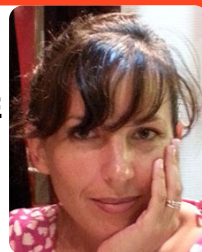
Lecture: **NAN STEIN**, Wellesley Centers for Women, who directs several national research projects on sexual harassment, gender violence, and teen dating violence in K-12

October 18

The Temptation to be Unethical: Luis Ramirez

CIVIL AND UNCIVIL DISOBEDIENCE

Lecture: **CANDICE DELMAS**, associate professor of philosophy and political science, Northeastern University, author of *A Duty to Resist: When Disobedience Should Be Uncivil*



October 25

DOMESTIC VIOLENCE: CHANGING CULTURAL NORMS

Focus: Marcia Miller Boehlke

Lecture: **LEE CLASPER-TORCH**, Men's Engagement Coordinator for the RI Coalition Against Domestic Violence, Ten Men facilitator

November 1

ART TO EFFECT SOCIAL CHANGE

Focus: Ly Thai

Lecture: **IVAL STRATFORD KOVNER**, MS MFA National Arts Advocate and NEA Grant Recipient. Recent 2nd Place Professional Artist Category, National Parks Exhibition



November 8

VOLUNTARY SIMPLICITY: ONE COMMUNITY'S CHOICE

Focus: Laurie Markoff

Lecture: **SUE DONALDSON**, Cornerstone Cohousing in Cambridge

November 15

HOW TO SUSTAIN MOMENTUM WORKING FOR CHANGE

Focus: A WomenExplore participant

Lecture: **TIM MCCARTHY**, dir Culture Change & Social Justice Initiative at HKS's Carr Center, faculty convener Emerging Human Rights Leaders Program



Thursdays in Harvard Sq, Cambridge MA

11 am Registration

11:30 am Focus

12 noon–1 pm Main Lecture

1 pm–1:30 pm Discussion

At Democracy Center, 45 Mt Auburn St, cnr DeWolfe St

www.WomenExplore.org info@WomenExplore.org

WE, PO Box 380333, Cambridge MA 02238

Phone: Carol Goldman 617 926 1126

WE is an independent 501(c)(3) non-profit organization with no religious or other affiliations

Single session \$15 – pay more if you can, less if needed.

Series enrollment \$130.

Groups (5 or more) \$12. Students \$5.